

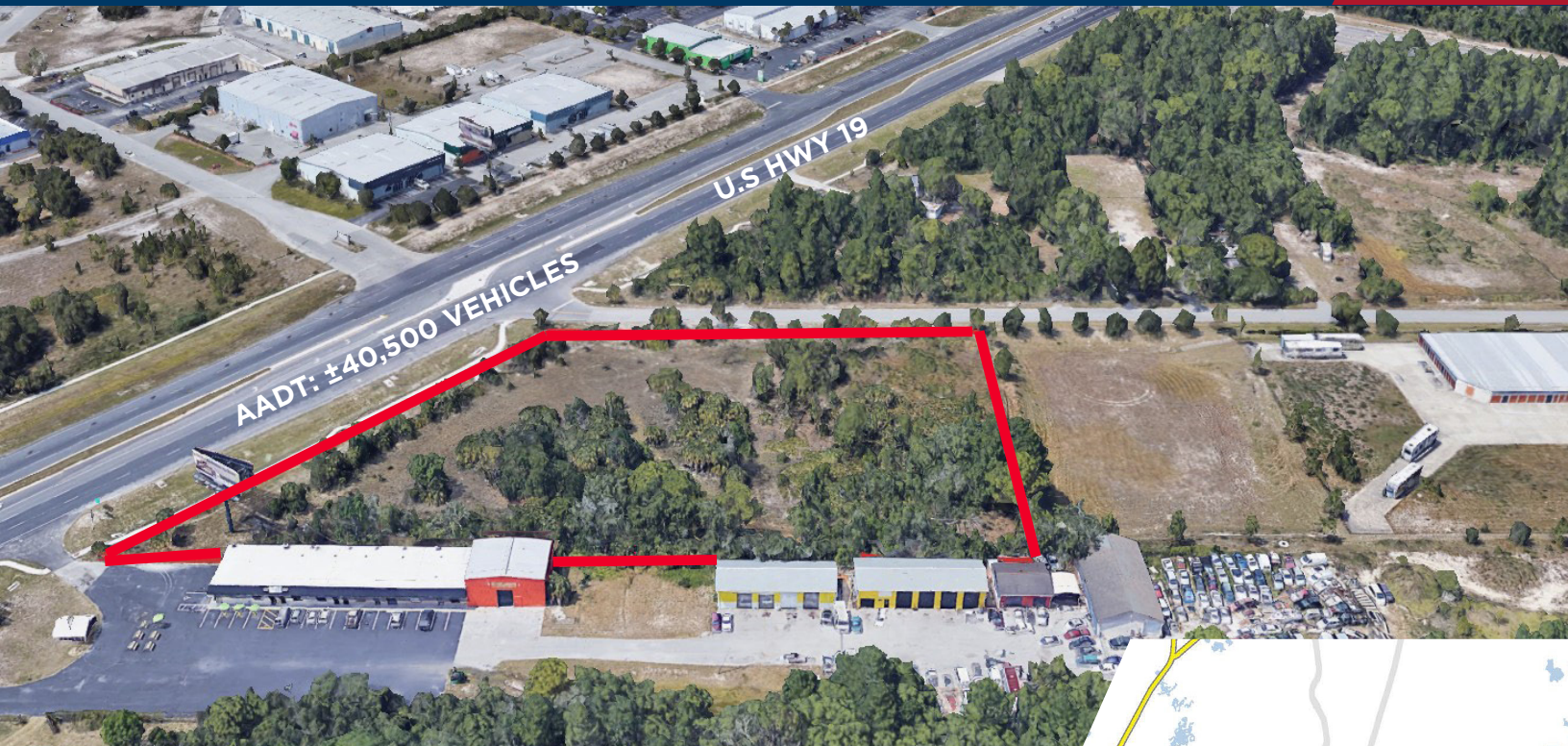


**CUSHMAN &
WAKEFIELD**

FOR SALE > COMMERCIAL LAND |

± 3.53 AC COMMERCIAL LAND OPPORTUNITY

HUDSON, FL 34667



PROPERTY HIGHLIGHTS

COMMERCIAL LAND DEVELOPMENT OPPORTUNITY

The subject property features approximately ± 3.53 acres offering premium frontage on U.S HWY 19 with an average annual daily traffic count of +/- 40,500 cars.

The parcel is zoned for general commercial use (C2) and is conveniently located within an hour drive of approx. 3 million people.

Price: Call Broker

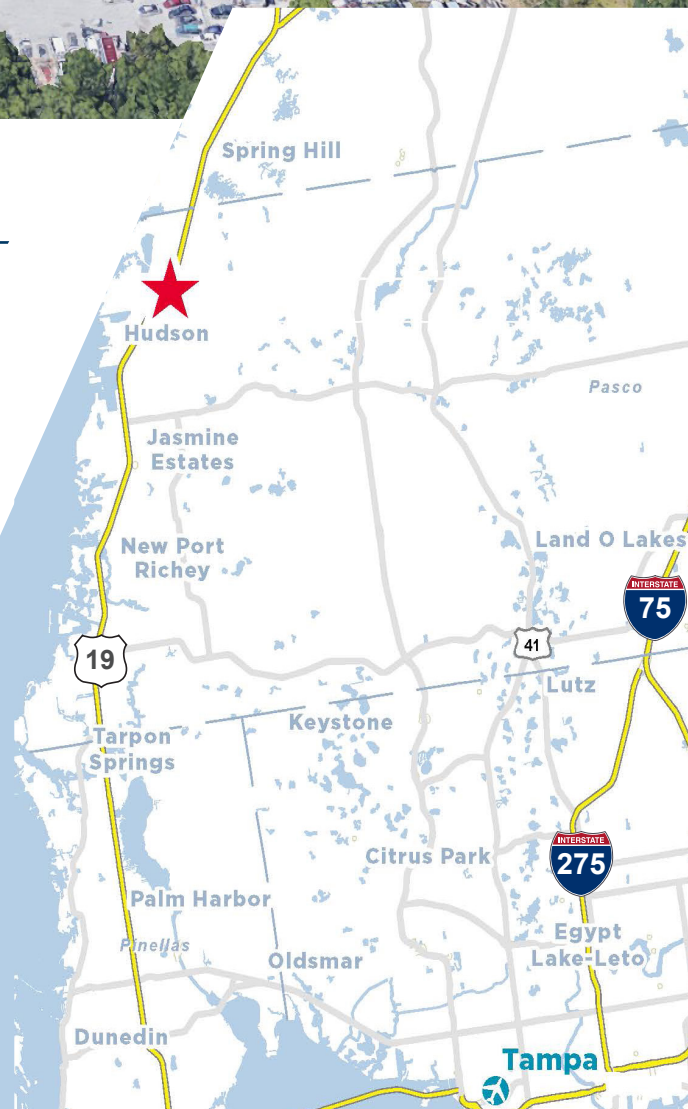
Acres: ± 3.53 AC

Zoning: C2 | General Commercial

Utilities: Water and Sewer Available

Traffic Count: 40,500 | Premium U.S HWY 19 Frontage

Parcel #: 13-24-16-0030-00200-0070





**CUSHMAN &
WAKEFIELD**

FOR SALE > COMMERCIAL LAND |

± 3.53 AC COMMERCIAL LAND OPPORTUNITY

HUDSON, FL 34667



- | | |
|-----------------------------------|--------------------------------|
| 1. TRANE SUPPLY | 6. FLOWERS BAKERY STORE OUTLET |
| 2. PROFESIONAL SERVICE INDUSTRIES | 7. DUNKIN DONUTS |
| 3. RITE FLOW SUPPLY | 8. RACETRAC |
| 4. FERGUSON HVAC SUPPLY | 9. CUBESMART STORAGE |
| 5. CABINET DREAMS & THINGS | 10. MR. AUTOMOTIVE REPAIR |



JOHN JACKSON, SIOR, CCIM.

Managing Director

+1 727 643 7316

john.jackson@cushwake.com

JT FAIRCLOTH

Director

+1 813 833 3242

jt.faircloth@cushwake.com

CASEY PERRY

Associate

+1 813 233 6564

casey.perry@cushwake.com



**CUSHMAN &
WAKEFIELD**